



18 USC 707

JASPER COUNTY/DISTRICT/STATE RULES & GUIDELINES

County Photography Entries DUE— January 13, 2017



**District Photography
Entries DUE—
February 1, 2017**
More information to come.....

- Ages—Clover Kids (K-2nd grade), 3rd thru 12th grade as of September 1, 2016
- Photos must be taken by participants between the dates of January 1, 2016 and the time of the entry.
- Photos may be submitted only one time and in only one category.
- Photos may be COLOR or BLACK & WHITE
 - **CHANGES**—
 - Photo format ***must be*** .jpeg; .jpg or .gif formats
 - Photos must be print quality resolution (300dpi)
 - Size: must be 8x10 (portrait) or 10x8 (landscape)
 - Size: photo may not be larger than 5120 KB (5MB)
 - Labeling/Naming your Photo:
age_category_county_last_name.jpg (ex: Intermediate_Details_Clover_Smith_John.jpg)
 - *Please email entries into c-vandevender@tamu.edu*

State Photography Entries DUE—April 1, 2017 thru April 15, 2017 (Seniors ONLY)

- Senior age 4-H members between the grades 9th thru 12th grade as of September 1, 2016
- Photos must be taken by participants between the dates of January 1, 2016 and the time of the entry.
- Photos may be submitted only one time and in only one category.
- Photos may be COLOR or BLACK & WHITE
 - **CHANGES**—
 - Photo format ***must be*** .jpeg; .jpg or .gif formats
 - Photos must be print quality resolution (300dpi)
 - Size: must be 8x10 (portrait) or 10x8 (landscape)
 - Size: photo may not be larger than 5120 KB (5MB)
- Each county may have only one entry per class for a total of 15 entries
- Entry Fee \$10 per photograph paid through 4HConnect at the time of entry into this contest.
 - **Entry Method**—
 - 4HConnect—<http://texas.4honline.com> (use Firefox)
 - Event Name—2017 State 4-H Photography Contest
 - Entry Period—Entry Open Date April 1st and Entry Close Date April 15th
 - Entries will not be accepted after 11:59 pm on April 15th!

Categories ATTACHED.....



It is extremely important that 4-H members, project leaders, parents, and county Extension agents review the descriptions of each category very carefully. Please do not enter photographs into categories that are duplicates from other categories or ones that do not clearly meet the category description. Photographs that do not meet the description of the category will be disqualified.

CATEGORY DESCRIPTION

EXAMPLE

PICTURE

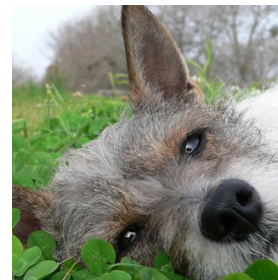
ANIMALS - DOMESTIC

Description

Photos focusing on the various animals that have been tamed and made fit for a human environment. To be considered domesticated, the animal must have their behavior, life cycle, or physiology systematically altered as a result of being under human control for many generations.

Examples

Dog, Sheep, Pig, Goat, Cow, Cat, Chicken, Horse, Camel, Goose, Ducks (domestic use), Hamsters.



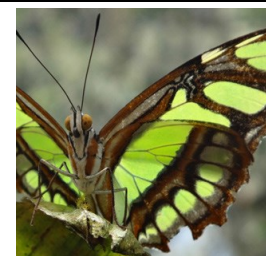
ANIMALS - WILDLIFE

Description

Category focuses on animals not tamed or domesticated and commonly found in the wild throughout the country and world. Photos can be of wildlife in nature, zoos, and/or petting zoos.

Examples

Deer, snakes, insects, rodents, elephants, etc.



CATCH-ALL

Description

Category for photos that do not fit into one of the other categories. This includes such photos as still-life, motion-blur, Polaroid transfers, SX-70 images, hand colored photos.

Examples

Polaroid image & emulsion transfers, still-life, long exposure zoomed images, and painting with light.



What is NOT Allowed

Do not submit a photo in this category which can clearly be submitted in another photography category. Catch-all is not intended for counties to use to eliminate duplicate photos from multiple 4-H members.

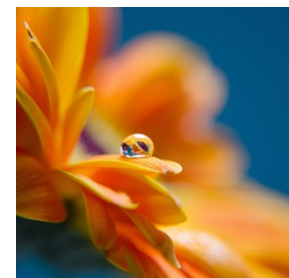
DETAILS & MACRO

Description

Getting in close is the name of the game for this category. We welcome pictures of small details that suggest a larger story. This is also the place for macro photographs (although a macro image of a flower might equally go into the Flowers category).

Examples

detail of a knot, a lock, or an abstract close-up - anything as long as it is a tight composition of a detail. Macro examples include parts of a flower bloom, insects, stamps, ice crystals, etc.



DIGITAL DARKROOM

Description

Photos are for digital art - images created or drastically altered in software like Adobe Photoshop®. For this category, a 4-H member will submit a minimum of at least two photos that demonstrate the before photo (s) and the altered, or final, digital piece. The multiple photos will illustrate the alterations made to the original photos. All photos should be incorporated into one file for submission.

Examples

Photoshop® composites and creations, images greatly manipulated with a variety of filters, photos with artistic borders, photos stitched into a panoramic.



CATEGORY DESCRIPTION**EXAMPLE****PICTURE****DOMINANT COLOR****Description**

Photos with a dominant color. The dominant element in the image must be a specific color, such as red, yellow, blue, white, black, white, green, etc. Black & White photos, duotones, are excluded from this category.

Examples

bowl of lemons, in a yellow bowl, on top of a yellow table covering, with a bright yellow tone sun lighting on it.

**ELEMENTS OF DESIGN****Description**

Images use of graphic elements of design. Photos that showcase line, shape, pattern, form, texture, perspective, etc. Photo can consist of any subject matter. Category is not for graphic illustrations made in commercial programs (i.e. Adobe Illustrator®) nor for extreme digital creations.

Examples

Perspective, Line, Pattern

**FOOD****Description**

Category is a still life specialization of photography, aimed at producing attractive photographs of food for use in such items of advertisements, packaging, menus and/or cookbooks.

What is NOT Allowed

No photos of alcohol beverages are allowed!

Examples

Thanksgiving dinner, cakes/pies, fruits and place settings, Easter eggs, sandwiches, ingredients, etc.

**MARINE/AQUATIC****Description**

Photos of any LIVING ORGANISM in bodies of either fresh or ocean (salt) water.

What is NOT Allowed

No photos of boats, ships or fishing supplies.

Examples

Fish, stingrays, whales, starfish, divers under water, etc.

**NATURE & LANDSCAPE****Description**

The focus of this category includes landscapes, outdoor scenics, nature images, sunsets, urban landscapes, seascapes, cityscapes, and farms. Images focus on the beauty of the outdoors.

Examples

Landscapes, Scenics, Outdoors.



CATEGORY DESCRIPTION

EXAMPLE

PICTURE

NIGHT PHOTOGRAPHY

Description

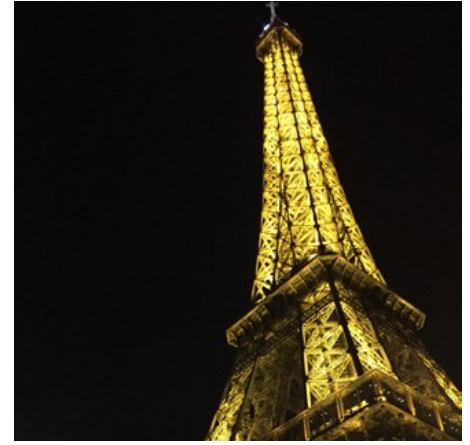
Photos taken outdoors between after-dusk and before dawn. Generally these photos are achieved by using artificial light or using a long exposure. This category can include any subject as long as the focus is on the skill and technique used to acquire the photograph.

What is NOT Allowed

No photos of sunsets, sunrises or photos taken inside. No sunlight at all is allowed.

Examples

Fireworks, lighting on buildings/structures, animals, plant/flora, people, etc.



PEOPLE

Description

Photos focus from all walks of life, parenting and family, children, babies, models/fashion, sports, and couples. See Model and Property Releases.

Examples

Kids & Family, Models/Fashion, Sports



PLANT/FLORA

Description

Photos of interesting, unique, and beautiful flowers and flora. Photography can occur outdoors or indoors. Photo subject should be that of a single flower, plant, bush, tree, etc. Large collections of plant/flora should be considered for entry into the Nature & Landscape category.

Examples

A rose, an upward shot of a tree, a flower bouquet, etc.



STORYBOARD

Description

A storyboard is one digital entry (one photo) that contains three smaller images and minimal text that tells a story. The story should be easily understood by the viewer. This entry is one single file.

Examples

Three images depicting the blooming of a rose bud at different stages, with the title of "Beginning of Beauty".



THEME

Description

Theme photo focuses on a subject announced and outlined in the contest rules and guidelines. For 2016-2017 the theme is "Reflections". A photo shot off any natural or artificial reflective surface. A well-executed shot can show perfect symmetry or a slightly distorted shot.

What is NOT Allowed

Photos entered into this category cannot be entered into another category of the contest.

Examples

Photos could be from a lake, a window pane, a mirror, or a polished/waxed car.

