

TEXAS A&M  
**AGRILIFE**  
EXTENSION

**JASPER COUNTY EXTENSION SERVICE**

271 E. LAMAR ST. SUITE 101, JASPER, TX 75951  
TEL. 409.384.3721 | FAX 409.384.5949  
EMAIL: JASPER-TX@AG.TAMU.EDU  
HTTPS://JASPER.AGRILIFE.ORG/

---

JASPER COUNTY



**2024 - 2025**

Family Handbook

---

DEVELOPED BY CAITLIN GALLEGOS, CEA-ANR  
TEXAS 4-H INFORMATION ADAPTED FROM [HTTPS://TEXAS4-H.TAMU.EDU](https://TEXAS4-H.TAMU.EDU)

# Table of Contents

**Welcome to 4-H** ..... 2  
 Jasper County Extension Faculty & Staff ..... 2

**Who’s who in 4-H?** ..... 3

**What is 4-H?** ..... 4  
 4-H Motto & Pledge ..... 4

**Who Can Participate?**..... 4  
 Age Requirements ..... 4

**How To Get Started** (5 easy steps)..... 5

**Membership & Enrollment** (New & Returning Families)..... 6

**Enrollment Instructions** (Youth & Adults)..... 7-9

**Participation & Eligibility Requirements**..... 9  
 Academic Eligibility & Excused Absences .....9

**Declaration of Eligibility Form** .....10

## Get Involved

**Clubs**..... 11  
 What is a Club? ..... 11  
 Our 4-H Clubs ..... 11

**Projects**..... 12  
 What is a project? ..... 12  
 Project Activities Popular in Jasper County 4-H..... 12  
 Texas 4-H Project List..... 13

**Contests & Livestock Shows**..... 14  
 District & State 4-H Contests ..... 14  
 Validation Information for Livestock Shows..... 14

**Youth Leadership & Adult Volunteer Opportunities** ..... 15  
 Club, County, District, State 4-H Officers, Youth Ambassador Programs,  
 Project Leaders & Club Managers ..... 15

**Recordbooks, Scholarships, Recognition, & Camps**

**Stay Informed about 4-H Activities & Events**

**Resources**

# Welcome to 4-H

Dear 4-H families,

Welcome to Jasper County 4-H! We are pleased to have your family as members of our program.

4-H is designed to be a family affair. To make the most of what 4-H has to offer, we encourage all youth members and their parents/guardians to become involved in local 4-H opportunities as possible. The program is primarily volunteer-led and would not be possible without the help of all our wonderful adult volunteers. With your help, we hope to strengthen and improve our program as well as provide more opportunities for the youth of Jasper County.

This handbook is intended to serve as a reference tool to help guide families towards a successful 4-H year. Please refer to this handbook for resources and answers to any 4-H questions that you may have. For further inquiries and assistance, call our office or email your County Extension Agent, Caitlin Gallegos.

We look forward to working with you!

## Jasper County Extension Faculty/Staff

**Caitlin Gallegos M.S.**   
County Extension Agent (CEA)  
Agriculture & Natural Resources (ANR)  
Caitlin.Gallegos@ag.tamu.edu

**Kathryn Bowie**  
Administrative Assistant  
kathryn.bowie@ag.tamu.edu

# Who's Who In 4-H

**County Extension Agent:** County Extension Agents have the responsibility for oversight of the 4-H and Youth Development Program in their assigned counties. This includes the following responsibilities:

- Charter county 4-H membership/organizations (i.e. 4-H Council, volunteer/parent groups, committees, etc.) annually. Chartering includes the permission to use the 4-H name and emblem.
- Provide opportunities for all youth who have reached the appropriate age to be participants and/or members in the 4-H and Youth Development Program.
- Plan and coordinate the county 4-H program.
- Staff the 4-H clubs/units utilizing volunteers with the assistance of the volunteer/parent leadership and youth leadership.
- Assist the volunteer/parent leadership and youth leadership in providing in-service education and resources for all 4-H volunteers in the county.
- Explain 4-H policies and procedures.
- Ensure that a quality 4-H educational program is conducted in the county.
- Inform 4-H volunteers and members about opportunities at county, district, state, national and international levels.
- Expect to conduct themselves as good role models for youth both in public and private.

**4-H Volunteer:** 4-H is a non-formal educational program delivered by volunteers who are trained and supervised by County Extension Agents. A 4-H Volunteer Leader is a person who is responsible for a group, activity, or event, and the members and/or other volunteers involved. There are two major roles adults may assume in 4-H: 1) Direct volunteers, or 2) Indirect volunteers.

*"It is the responsibility of the 4-H volunteer to carry out the assigned position responsibilities that they have accepted. 4-H volunteers are expected to conduct themselves as good examples for youth in both public and private life. This includes appropriate dress code, correct use of language, and moral conduct in accordance with the generally recognized standards of our society. It should be understood by the volunteers that they are expected to participate in learning, training, and teaching opportunities provided for them."* All volunteers must be screened through the Texas 4-H and Youth Development Program.

**Jasper County 4-H Program Area Committee (4-H PAC):** a committee that helps guide and direct both the Jasper County 4-H program and the youth development program for Jasper County. This committee is made up of 4-H parents, community leaders, 4-H members, and other stakeholders in youth development.

**County 4-H Council:** A group of 4-H members who represent the community clubs, school clubs, or special interest projects on a county basis. County 4-H Council assists with developing and coordinating county projects and events. Presidents & council delegates from each club as well as elected officers make up the council. All members are invited to meetings.

**Council Delegate:** A youth elected as a representative for their club on the county- level during County Council meetings.

**Club Manager:** A 4-H club manager provides guidance in the general art of leadership and management to a 4-H club unit. A 4-H club manager involves 4-H officers, parents, leaders, and members in promoting the goals of 4-H and serves as the contact person between the club and the County Extension Office.

**Club Officer:** The 4-H club officers are elected by the club each year and have the responsibility of planning, implementing, and evaluating all club meetings and activities. Working with club managers, they form an executive committee to give overall guidance to the club.

**Clover Kid:** 4-H Clover Kids are youth in grades K-2. As an affiliated group, youth enrolled as 4-H Clover Kids have activities and programs suitable for their age group. To advance their learning and competitive skills, Clover Kids are able to participate in activities, recognition programs, and competitive events only to receive a "Participation" award. Clover Kids are not eligible to serve as club and county officers.

**Project Leader:** The 4-H project leader provides structured learning experiences and personal guidance and counseling in project-related opportunities for the 4-H members enrolled in the project group.

**Activity Leader:** Activity leaders work closely with the club managers. They are responsible for one or more activity areas in the 4-H club. This will be a non-project area. Some examples of activity leaders are: new member/family coordinator, method demonstration leader, recordbook leader, judging leader, field trip coordinator, committee advisor, and community service leader.

**Parents:** Parents provide support and guidance to members and see that members attend meetings/activities and complete responsibilities. Parents should attend as many activities as possible and assist with one or more 4-H events.

# What is 4-H?

## About 4-H

4-H is a national organization which helps young people develop life-long knowledge and skills to become engaged citizens. With over 65,000 youth members enrolled in community clubs across the state, 4-H is the largest youth development program in Texas. 4-H is a voluntary, non-formal, educational program. Through various learning experiences, 4-H provides opportunities for youth to gain leadership, citizenship, and life skills that will enable them to become self-directing, productive and contributing members of society. The 4-H program gives youth the opportunity to explore and pursue their interests while making friends through both non-competitive and competitive experiences such as 4-H club meetings, projects, contests, educational programs/workshops, tours, community service, camps, and more on county, district, state, and even national levels.

## 4-H Motto

“To Make the Best Better”



## 4-H Pledge

“I pledge:

My Head to clearer thinking,

My Heart to greater loyalty,

My Hands to larger service, and

My Health to better living, for my club, my community, my county, and my world.”



## Who Can Participate?

### Age Requirements

Youth may participate in the 4-H year from September 1st of grade three through August 31st following the completion of grade twelve, with these age restrictions:

- **Minimum age** - 8 (as of August 31, 2023, in addition to being in the 3rd grade)
- **Maximum age** - 18 (as of August 31, 2023)

# How To Get Started

**Below are 5 easy steps to help youth get started in 4-H:**

**1**

## **Select a Project**

Find one or more fun project(s) that may interest you and consider the costs, time, space and equipment that will be required for you and your family to start and complete your project(s). (Refer to pages 12-15 of this handbook to learn more about 4-H projects and see our local project clubs to begin planning.)

**2**

## **Find a Club to Join**

Find out what 4-H Clubs Jasper County Currently has available and join the one that works best for your family. (Learn more about what a 4-H Club is and our local community and in-school clubs on page 11)

**3**

## **Enroll in 4-H**

Once you have found a project to start and a club to join, with the help of your parents, you will need to become an approved 4-H member by completing and submitting an online enrollment application through the 4HOnline Registration system. (See pages 6-9 of this handbook for enrollment requirements and instructions)

**4**

## **Get Involved**

Become involved in 4-H by starting and completing a project, participating in club meetings, as well as county, district, and state-wide 4-H events/activities, educational workshops, contests, community service, and leadership opportunities. (Learn more about 4-H involvement opportunities on pages 12-17 of this handbook)

**5**

## **Record your Success**

Keep records of all your 4- involvement an success by taking photos and keeping relevant documents such as logs of community service hours, proof of participation, awards, and receipts. As the year progresses, use these records to create a Texas 4-H Record Book detailing all your hard work throughout the 4-H year. (Learn more about Texas 4-H Record Books on page 16 of this handbook)

# Membership & Enrollment

## Texas 4-H Member Categories

Junior: Grades 3, 4, and 5

Clover Kids: Kindergarten - 2nd Grade

Intermediate: Grades 6, 7, and 8

• Note: Clover Kids may participate in age-appropriate 4-H experiences but are not eligible to compete.

Senior: Grades 9, 10, 11, and 12

## Membership & Enrollment Requirements

An applicant becomes a 4-H member or volunteer after completing and submitting an individual and online registration via 4HOnline at <http://texas.4honline.com>, paying a participation fee, and receiving registration approval.

### 4-H Enrollment Year

The Texas 4-H year officially begins on September 1st and ends August 31st. However, enrollment opens on August 15th.

### Who Must Enroll on 4HOnline?

Each year, all former and new 4-H members, parents, and volunteers directly involved in 4-H MUST enroll/re-enroll for the current 4-H program year. Note: Youth that are 8 years old and in the 3rd grade should not start their enrollment until September 1st.

### Adults Who Must Complete 4HOnline Enrollment

All 4-H parents/adult volunteers who work directly with youth or adults by providing unpaid support for the 4-H programs through face-to-face contact are required to be screened through the Extension Volunteer Standards (EVS) Program by completing the volunteer application process on 4HOnline. Direct volunteers must pass a criminal background check, complete necessary trainings, and have their application approved prior to fulfilling any volunteer duties for AgriLife Extension.

### Annual Participation Fees

Youth Club Member Participation Fee:

- \$25.00 - Discounted Enrollment Fee (August 15th - October 31st)
- \$30.00 Regular Enrollment Fee (November 1st - end of 4H year)
- \$10.00 Clover Kid Enrollment Fee

Adult Volunteer Application Fee

- \$10.00

# Enrollment Instructions



## TEXAS 4HONLINE FAMILY GUIDE FAMILY MANAGEMENT



### NEW FAMILY

- Click the Don't have an account? link.

Your family profile must be associated with a valid email address. This will be your login and you will receive communications to this address. It will also be the email address where a password reset will be sent, if needed.

The email address you provide can only be associated with one family profile. If 4HOnline does not accept your email address, you may already have a 4HOnline family account. Contact your local Extension office for assistance.

- Select Texas from the drop-down menu.
- Select Texas 4-H and Youth Development under the Select an Institution section.

- Select your county from the drop-down menu. When selecting your county, you are choosing the 4-H program in which your family will participate. There is not a way to undo this selection once chosen.
- Click the blue Continue button or the Back button to make changes.

- Complete your family's information. Required fields are marked in red and must be completed to move to the next screen. If you have mistakenly chosen the wrong county click back button to adjust it before moving on to the next screen.
- Click the blue Create Account button.





## TEXAS 4HONLINE FAMILY GUIDE

### FAMILY MANAGEMENT



Texas 4-H and Youth Development

<b>County</b> <small>required</small>	<input type="text" value="State Office"/>
<b>Email</b> <small>required</small>	<input type="text" value="personal@mail.texas4h.org"/>
<b>Confirm Email</b> <small>required</small>	<input type="text" value="personal@mail.texas4h.org"/>
<b>Family Name</b> <small>required</small>	<input type="text" value="Personal"/>
<b>Mobile Phone Number</b> <small>required</small>	<input type="text" value="555-555-0000"/> <small>Format: (nn) nnn-nnnn</small>
<b>Password</b> <small>required</small>	<input type="password" value="*****"/>
<b>Confirm Password</b> <small>required</small>	<input type="password" value="*****"/>

Back **Create Account**

Your family information must be associated with a valid email address. This will be your login and you will receive 4-H communications at this address. It will also be the email where your password reset will be sent, if necessary.

- Enter your family’s address information and click the blue Verify button. The verification process may require you to select an appropriate USPS format. The local county Extension office may have authority to bypass this for rural areas.

Verify Your Address

Address	<input type="text" value="PO Box 111111"/>
Address 2	<input type="text"/>
City	<input type="text" value="College Station"/>
State	<input type="text" value="Texas"/>
Postal Code	<input type="text" value="77845"/>
Country	<input type="text" value="US"/>

**Verify**

After the address is verified, your family profile has been created! You will receive an email confirming your family profile. The next screen will start the process to add the first member to the family.

If there is already another record in 4HOnline with a matching address, you may see this Duplicate Address screen. Use the browser “back” button to return to the previous screen. Double-check the address you entered and try again. Be sure you have included the full USPS address and a unit/apartment number, if that is part of your address. If you receive the Duplicate Address message again, log out and contact your local county Extension office for assistance.

An email account can only be associated with one family profile. If you enter an email address that is already associated with a 4HOnline profile, you will see an existing family profile message.

- Click the Confirm button and continue to log in to the existing account.

Existing Account x

An account with this email has already been found, please sign in or recover password

**Confirm**
Cancel

## RETURNING FAMILY

1. Enter the family's email address.
2. Type in the password.
3. Click the blue Sign in button.

If you do not remember the password associated with your family profile, you can use the “Reset password” function at the bottom of the screen. A temporary password and instructions will be sent to the email address associated with your family account.

If you do not remember the email associated with your family profile, contact your local Extension office. The local county office can confirm or change the email address in your family profile. If the county 4HOnline Manager changes the email associated with your family account you will need to reset your password before logging in.

Remember: Your family profile must be associated with a valid email address. This will be your login and you will receive communications at this address. It is also the email address where a password reset will be sent. Once you have logged in to your family profile, you may review the Member List, add new family Members, and complete 4-H enrollment and registration actions.

# Participation & Eligibility

## Participation & Eligibility Requirements

### Complete 4-H Enrollment

To participate in any county, district, state, or national 4-H sponsored or organized events such as club/project meetings or practices, contests, clinics, workshops, fundraising/social events, camps, etc., in association with or in representation of the Jasper County 4-H program, all participating youth and involved adult volunteers must be enrolled members of the 4-H program

### Start & Complete a Project

All members must enroll in and participate in at least one project that is either organized or self-directed. Project participation should include a combination of experiences such as hands-on activities, practices, research, workshops, contests, demonstrations, exhibits, community service, etc. A member may add or delete project enrollments at any time during the 4-H year.

### Join a Club & Attend Club Meetings

All members are expected to join a 4-H club and participate in monthly club meetings/activities.

## Academic Eligibility & Excused Absences

All 4-H members in public, private, or home school participating in any 4-H events or activities (competitive or non-competitive) that require absence from school must provide proof of academic eligibility in accordance with the Texas Education Code to be excused from school. Proof should be provided through the completion and submission of a Declaration of Eligibility (DE) Form to Agent Caitlin Gallegos, at least 30 days prior to the desired event or activity. If you are unsure if a DE form should be completed for a particular event/activity, check with your club manager(s) or County Extension Agent.



## Texas 4-H Youth Development Program DECLARATION OF ELIGIBILITY FORM

This form is requested in accordance with the requirement of the Texas Education Code and in cooperation with the Texas Education Agency and local school board policies.

*Instructions: Complete one form per activity. 4-H member should return original form to the County Extension Office*

### PARENT/GUARDIAN SECTION

In accordance with 4-H policy, provided by our local Extension office, I respectfully request:

(CHECK ONE)

- Academic eligibility information only.
- Academic eligibility information and authorization to receive an excused absence from school.

Date of Activity: \_\_\_\_\_ Name of Activity: \_\_\_\_\_

Signature of Parent/Guardian: \_\_\_\_\_

### COUNTY EXTENSION AGENT SECTION

I hereby certify that \_\_\_\_\_ is a member of 4-H in \_\_\_\_\_ County and is scheduled to participate in this activity representing 4-H. He/she will be under the supervision of the Texas A&M AgriLife Extension Service faculty or agency's designated volunteer leader.

\_\_\_\_\_  
Date

\_\_\_\_\_  
Signature of County Extension Agent

### SCHOOL PRINCIPAL OR DESIGNEE

**ACADEMIC ELIGIBILITY (CHECK ONE)**

- I do certify that the student is academically eligible to participate in the above mentioned activity.
- I do not certify the student because he/she is **NOT** academically eligible to participate in the above mentioned activity.

**EXCUSED ABSENCE (CHECK ONE)**

- An excused absence will be granted.
- An excused absence will **NOT** be granted.
- Does not apply.

**EDUCATIONAL STATUS (CHECK ONE)**

- Face-to-Face (on campus)
- Virtual Option
- Homeschooled

\_\_\_\_\_  
Date

\_\_\_\_\_  
Signature of Principal or Designee

\_\_\_\_\_  
Name of School

# Clubs

## What is a 4-H Club?

A 4-H Club is an organized group of at least five youth from three different families who meet regularly with adult volunteers or staff for a long-term, progressive series of educational experiences.

## 4-H Club Purpose

The purpose of a 4-H Club is to provide positive youth development opportunities to meet the needs of young people to experience belonging, mastery, independence, and generosity. In 4-H clubs, youth may serve as officers and learn to conduct meetings, handle club funds, facilitate and participate in group decision making, plan/organize club activities and events, and give back to their communities.

## Our Clubs

### Bullseye 4-H

- Club Manager: Mandi Clark
- Meeting Information:
  - Dates: 3rd Tuesday of each month
  - Time: 6:00 pm
  - Location: JNEC, Kirbyville

### Kirbyville Wildcats 4-H

- Club Manager: Amanda Gates & Amanda Fultz
- Meeting Information:
  - Dates: 1st Tuesday of each month
  - Time: 6:00 pm
  - Location: First Assembly of God, Kirbyville

### Buna 4-H

- Club Manager: Clarice Hilton
- Meeting Information:
  - Dates: 1st Monday of each month
  - Time: 6:30 pm
  - Location: Grey Leopard Event Center

### Brookeland Wildcats 4-H

- Club Manager: Amanda Lundquist
- Meeting Information:
  - Dates: 3rd Tuesday of each month
  - Time: 7:00 pm
  - Location: Brookeland High School

# Projects

## What is a 4-H Project?

A 4-H Project is a series of learning opportunities led by a trained adult or teen volunteer, or self-directed by a 4-H member. Projects are tools that 4-H uses to help club members gain subject matter knowledge and develop life skills such as goal setting, evaluating products and experiences, keeping records, and learning about character.

## 4-H Project Categories

### Club, County, District, & State Projects

- These Projects are supported by educational curricula from the Texas A&M AgriLife Extension Service and may include state-sponsored project experiences

### Self-Directed Projects

- Self-directed projects are selected and carried out by 4-H members themselves. They conduct their own research and share or showcase what they learned through presentations, speeches, contests, workshops, field trips, record books, etc.

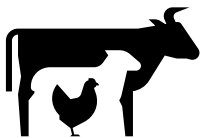
## Project Activities

4-H project activities enable youth to learn through a variety of life experiences. A 4-H project usually consists of four types of activities:

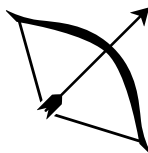
- **Hands-on:** Making, producing, observing, testing, interviewing
- **Organized:** Demonstrations, speeches, workshops, contests, camps, judging contests, project activities, exhibits
- **Leadership/Citizenship:** Conducting, planning, teaching, helping, informing, organizing
- **Community Service:** Volunteering, serving, helping, collecting, reflecting, donating

## Popular Project Activities in Jasper County 4-H

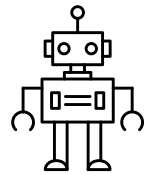
### Livestock



### Shooting Sports



### Robotics



### Food Challenge



### Photography





# TEXAS 4-H PROJECT LIST



AGRICULTURE & LIVESTOCK

- Beef Cattle
- Dairy Cattle
- Dog Care & Training
- Goats (Dairy & Mohair)
- Goats (Meat)
- Horse
- Horticulture
- Junior Master Gardener
- Livestock Judging
- Meat Science
- Poultry (Chickens & Turkeys)
- Rabbits
- Sheep
- Soil & Crop Science
- Swine
- Veterinary Science



FAMILY & COMMUNITY HEALTH

- Consumer Education
- Fashion & Interior Design
- Foods & Nutrition
- Health & Personal Safety



NATURAL RESOURCES

- Aquatic Science
- Entomology
- Forestry
- Outdoor Education & Living Skills
- Range Science
- Shooting Sports
- Sportfishing
- Water Conservation & Education
- Wildlife & Fisheries



LEADERSHIP & CITIZENSHIP

- Citizenship
- Community Service
- Global Citizenship
- Leadership
- Public Speaking
- Theater & Performance Arts
- Workforce Preparation
- Youth Entrepreneurship



SCIENCE, TECHNOLOGY, ENGINEERING, & MATH

- Energy
- Photography/Videography
- Robotics
- Rocketry
- Science, Technology, Engineering, & Math (STEM)
- Computer Science

**SELF DIRECTED PROJECTS:**

Individualized areas of interest where members can explore appropriate subject matter when no Texas approved 4-H curriculum or named project exists.

## Project Clubs

Jasper County 4-H currently offers two Project clubs, Jasper County Robotics Club and the Pineywoods Vet Science Club. Contact your Club Manager or County Extension Agent if you're interested in either joining these project clubs or would like to start a project club!

# Contests & Livestock Shows

## 4-H Contests

Throughout the 4-H year various open, invitational, and qualifying contests are offered across the district and state in all project areas. Registration for most district & state 4-H contests/events must be done through family 4HOnline profiles.

### District 4-H Contests

- District 5 4-H contests enable 4-H members to showcase the skills they obtained through their participation in 4-H projects. Some district 4-H contests are offered as stand-alone events while others may occur during the multi-day, *Come Alive in District 5* event.
  - County Contests: Some district contests may require 4-H members to qualify on the county-level. A need for county qualifying contests will be determined by agents and will be conducted on an as needed basis depending on the number of interested contests participants.

### Texas 4-H Roundup

- Texas 4-H Roundup is a qualifying and invitational event for 4-H members in the senior age division (92th-12th grades) who placed in a District-level Roundup or signed up to compete in one of the invitational events. The Texas 4-H Roundup has around 50 diverse competitions that tie in with the many projects that 4-H has to offer and usually takes place in June.

## Livestock Shows

### Validation Information:

To participate in county and major livestock shows, 4-H members **MUST** have their animals validated prior to showing. For more information about important livestock project dates, deadlines, and dues please contact Ag & Natural Resource Agent, Caitlin Gallegos.

Phone: 409.384.3721

Email: [Caitlin.Gallegos@ag.tamu.edu](mailto:Caitlin.Gallegos@ag.tamu.edu)

### Shows our students can compete at!



# Youth Leadership & Adult Volunteer Opportunities

## **Youth Ambassador Programs**

The Texas 4-H Ambassador Program strives to provide high school-aged 4-H members the opportunity to develop and practice advanced leadership skills to mentor other youth, and to become knowledgeable representatives and advocates for their respective project. Ambassadors may represent a county 4-H program or a specific 4-H project/program area. Ambassador opportunities are available on the state-level as well, examples include Healthy Texas Youth Ambassadors, STEM Ambassadors, Livestock Ambassadors, and such. For more information about becoming a Texas 4-H Ambassador in a particular project area, visit: <https://texas4-h.tamu.edu/ambassadors/>.

## **Club, County, District, & State 4-H Officers**

4-H members have the opportunity to serve as 4-H officers on the club, county, district, and state levels. At each level, officers are elected by their peers to represent the 4-H program while collaborating with adult volunteers and Extension faculty to plan, coordinate, and facilitate activities and events. Other requirements for various levels of officer positions including age restrictions and applications may apply depending on each group's respective bylaws.

## **Project Leaders & Club Managers**

- **Project Leaders:** Enrolled adult volunteers who provide structured learning experiences, personal guidance, and counseling in project-related opportunities for 4-H members enrolled in the project.
- **Teen Leaders:** Enrolled youth volunteers/4-H members between the ages of 13 and 19 with one year of project experience who accept the full leadership responsibility under the guidance and advice of an adult volunteer for a 4-H project.
- **Junior Leaders:** Enrolled 4-H members who have excelled in his or her project and exhibits leadership by assisting project leaders with project learning experiences.
- **Club Managers:** Enrolled adult volunteers who provide guidance to the general leadership/management of a 4-H club unit, involves 4-H officers, parents, supporting adults, leaders and members in promoting the goals of 4-H, and serves as the contact person between the club unit and the County Extension Office.



# Record Books, Scholarships, Recognition, & Camps

## Record Books

All 4-H members are encouraged to keep project records and have these records reviewed annually by submitting a Texas 4-H Record Book. The primary purposes of completing a Record Book are for a young person to develop the skills necessary to set goals, work toward achieving those goals, reflect on his/her experiences, and set new and higher goals for themselves. A secondary benefit is to prepare young people for the process of completing academic scholarship and/or collegiate admission applications.

Lastly, these books can be entered into Record Book contests.

A Texas 4-H Record Book consists of information that a 4-H member records over the course of a 4-H year that documents his/her goals, knowledge and skills gained, leadership experiences, awards earned, and service in his/her community. Those experiences are recorded into forms, narratives, and a story/photo portfolio written by the 4-H member. The information is combined and is typically submitted for evaluation around June or July. Resources & guides for completing a Record Book can be found at

<https://texas4-h.tamu.edu/recordbooks/>.

## Scholarships

With 4-H comes opportunities for 4-H members to earn scholarships. Many scholarships can be earned by members of all ages through their participation in select 4-H opportunities. Academic scholarships can be applied for by eligible 4-H members through the Texas 4-H Youth Development Foundation.

Visit <https://texas4hfoundation.org/types-of-scholarships/>, for more information.

Jasper County Junior Livestock Foundation also provides a Senior Scholarship, Information can be found in the current year's Livestock Rulebook and is typically due by February 1st.

## Recognition & Awards

County 4-H Awards: At the end of each 4-H year, all Jasper County 4-H members have the opportunity to be recognized for their accomplishments at the County 4-H Awards Recognition Program. Some of the awards that 4-H members can earn include Project Completion Pins, for each project that 4-H members completed and the Bronze, Silver, and Gold Star Award.

The Gold Star Award is the highest achievement that a 4-H member can be awarded at the county level. It is awarded each year to an outstanding senior-level (9th-12th grade) 4-H members based on their total 4-H career. In addition to other requirements, the 4-H'er must submit a Record Book in the year he or she applies for the award and must have completed projects in at least three project areas. This award is only awarded once in a member's 4-H career.

## Camps

Throughout the year, 4-H camps are offered on the district and state levels. See the district-wide camps offered annually listed below and visit, <https://texas4hcenter.tamu.edu/> for more information about camps held at the Texas 4-H Conference Center in Brownwood, Texas:

- Junior Leadership Lab: is held in the fall for 4-H members who are in 3rd-8th grades. Participants gain valuable project knowledge and skills they can take home and implement in their local county 4-H program. The activities offered are designed to explore creativity in leadership roles, enhance teambuilding skills, and develop communication and public speaking skills.
- Senior Leadership Lab: is held in June for 4-H members who are in or entering 9th grade- 12th grade including those just graduated seniors. The event is designed to prepare District 5 4-H members for various leadership roles at the county, district, and state levels.

# Stay Informed About 4-H Activities & Events

## **Jasper County 4-H**

- 4-H Newsletter - Newsletters will be sent out to highlight upcoming events, member accomplishments, and exciting 4-H activities happening throughout the county.
- 4-H Club Meetings - Members can stay up to date on club and county 4-H activities by attending club meetings.
- Social Media
  - Jasper County 4-H: <https://www.facebook.com/JasperCO4H/>
- Website
  - Jasper County AgriLife Extension Service: <https://jasper.agrilife.org>

## **District 5 4-H**

- 2023-2024 District 5 4-H Contest/Events Schedule - Every year, the District Office releases a schedule of district, state, and national-level 4-H contests and events. This schedule will be released in September and is updated periodically throughout the year. This schedule will be sent to all 4-H families through 4HOnline.
- Social Media
  - District 5 4-H: <https://www.facebook.com/District5.Texas.4H>
- Website
  - On the District 5 4-H website you can find district contest and event information such as registration dues, deadlines, rules/guidelines, and more. <https://d54-h.tamu.edu>

## **Texas 4-H**

- Texas 4-H Website
  - The Texas 4-H website is the go-to resource for all things Texas 4-H. On this website, there are resources for 4-H projects, club managers and officers, guides for navigating the 4-H online system, information for Texas 4-H events, and so much more!
  - Texas 4-H: <https://texas4-h.tamu.edu>